

Comune di Palermo

Progetto di Restauro e Risanamento Conservativo
di Villa Lisetta interna all'Istituto Gonzaga di Palermo
in via Piersanti Mattarella, 38/42



Elaborato: ESECUTIVO

Planimetrie - Prospetti - Sezioni Progetto

Tavola:

06

Scala:

1 : 100

Data:

10/01/2018

Gruppo di progettazione:

Ing. Paolino Gervasi
Ing. Daniele Gervasi
Ing. Maurizio Migliorino
Arch. Lavinia Romano
Arch. Ornella Correnti
Dott. Arch. Giulia Lupo

I Progettisti:

Ing. Paolino Gervasi

Ing. Daniele Gervasi

Ing. Maurizio Migliorino

Arch. Lavinia Romano

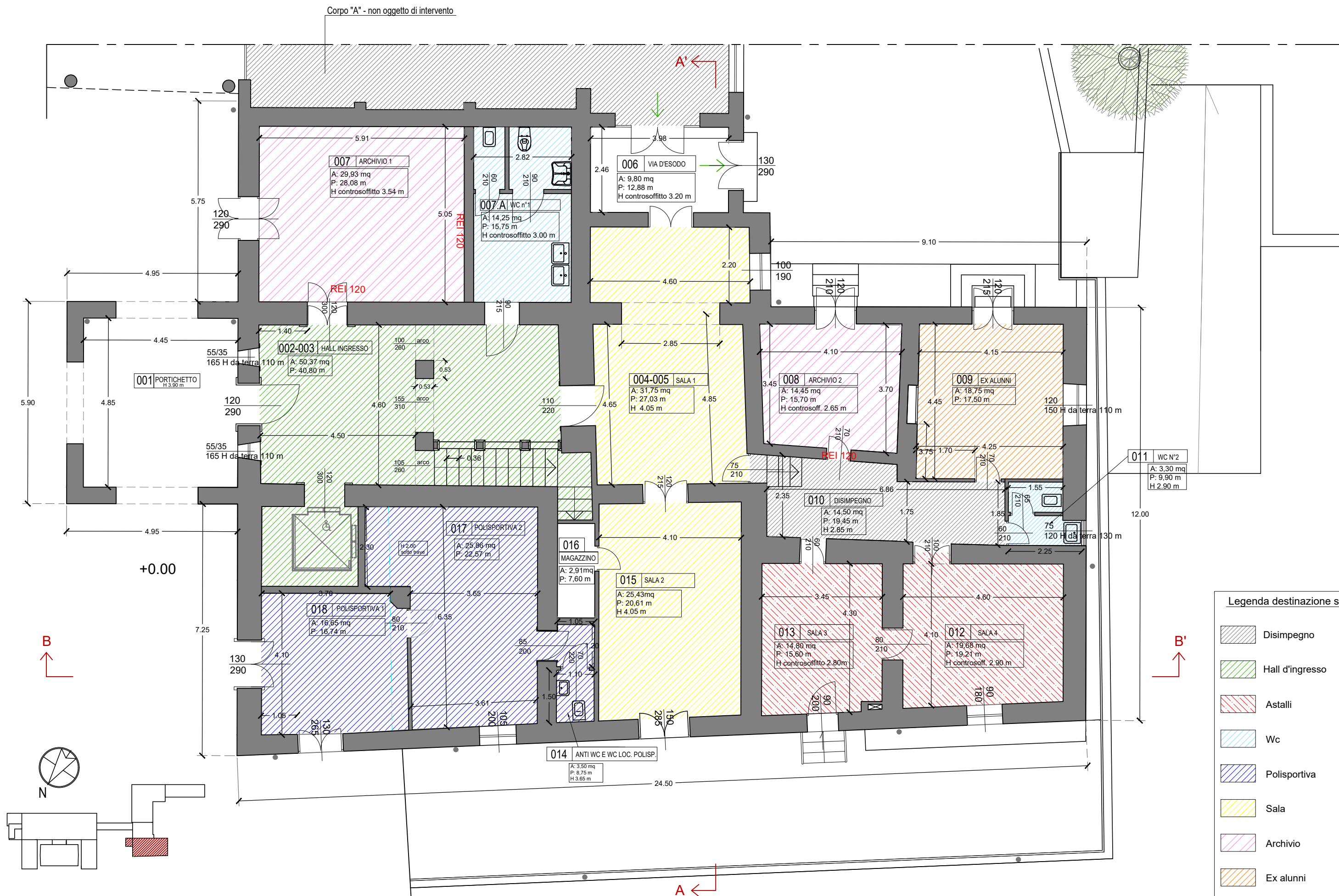
Arch. Ornella Correnti

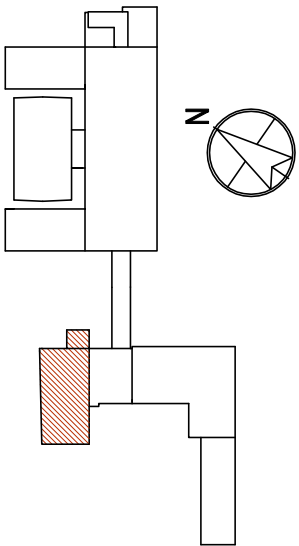
Il Committente:

Casa della Compagnia di Gesù
detta Collegio Gonzaga

Technè Ingegneri Ass.
via Franz Lehar, 6 Palermo
technè.ing@libero.it
tel. 091.5075648







Legenda destinazione superfici

- Uffici
- Sala riunioni
- Ufficio del Rettore
- Wc
- Segreteria
- Hall ingresso
- Disimpegno

+4.19

TERRAZZO PIANO 1
A 1 62.00 mq
P 52.25 m

A' ←

14.90

24.58

9.10

5.90

12.00

+0.00

111
SEGRETARIA
A 26.80 mq
P 21.70 m
H controsoff 3.00 m

110
UFFICIO 1
A 42.88 mq
P 18.92 m
H controsoff 3.00 m

109
UFFICIO 2
A 17.98 mq
P 17.04 m
H controsoff 3.00 m

108
UFFICIO 3
A 21.38 mq
P 19.16 m
H controsoff 3.00 m

107
UFFICIO 4
A 18.64 mq
P 17.33 m
H controsoff 3.00 m

106
SALA RIUNIONI
A 29.50 mq
P 22.05 m
H controsoff 3.05 m

111.A
CORRIDOIO
A 18.02 mq
P 23.47 m
H controsoff 3.00 m

102
HALL INGRESSO
A 36.75 mq
P 21.12 m
H controsoff 3.05 m

103
CORRIDOIO
A 6.63 mq
P 12.16 m
H controsoff 3.00 m

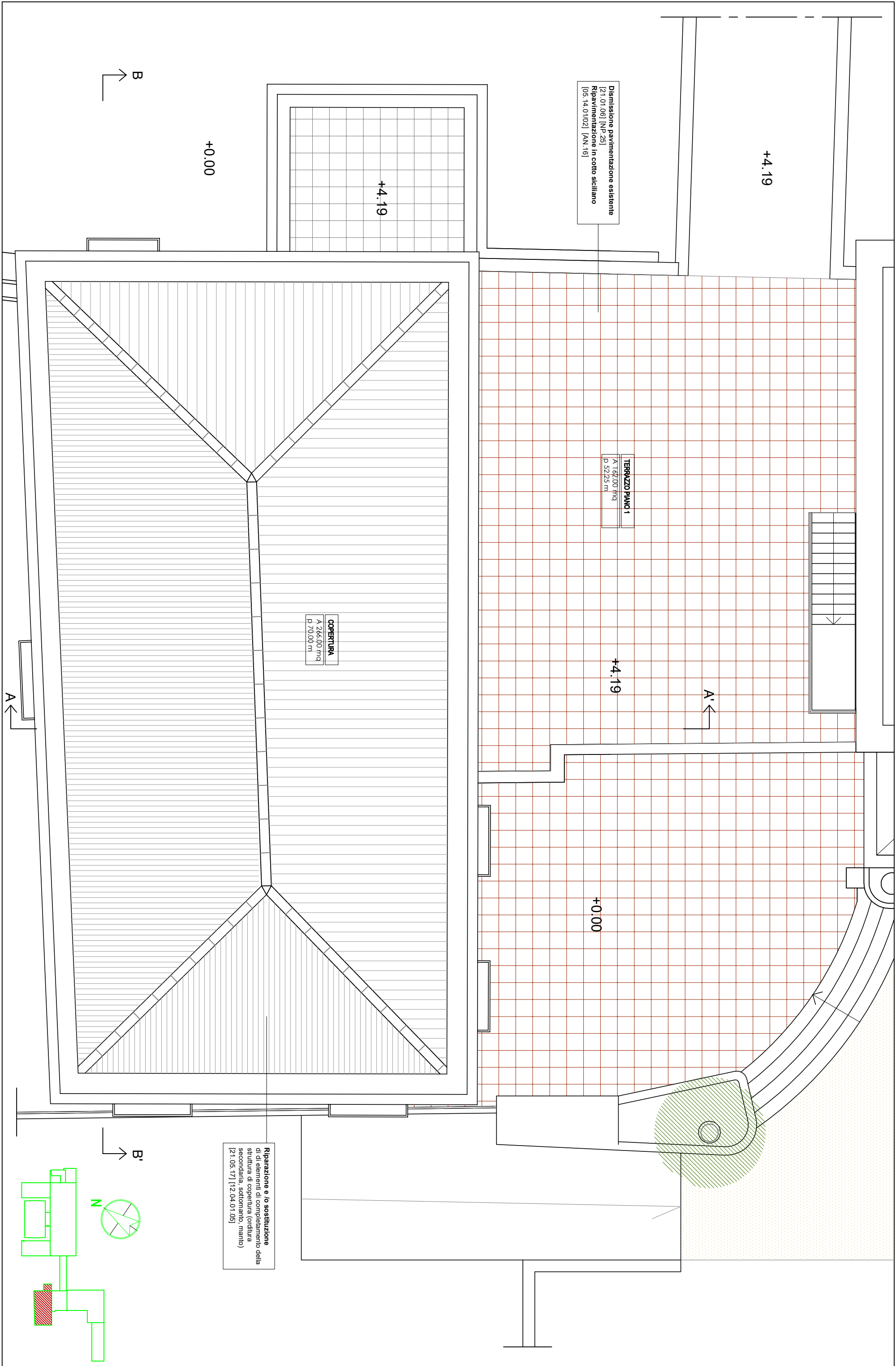
105
UFFICIO 5
A 18.82 mq
P 17.40 m
H controsoff 3.18 m

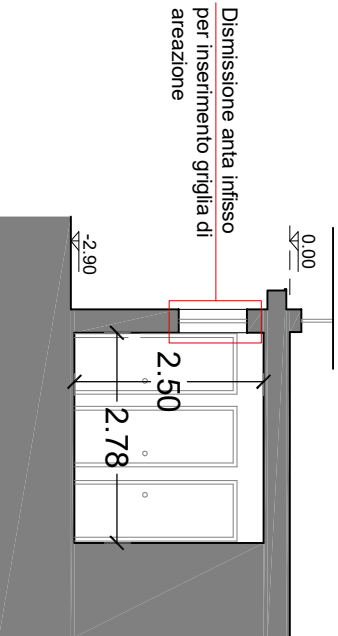
101
Locale Tecnico
A 1.72 mq
P 5.60 m

104
Wc
A 15.44 mq
P 16.47 m
H controsoff 2.75 m

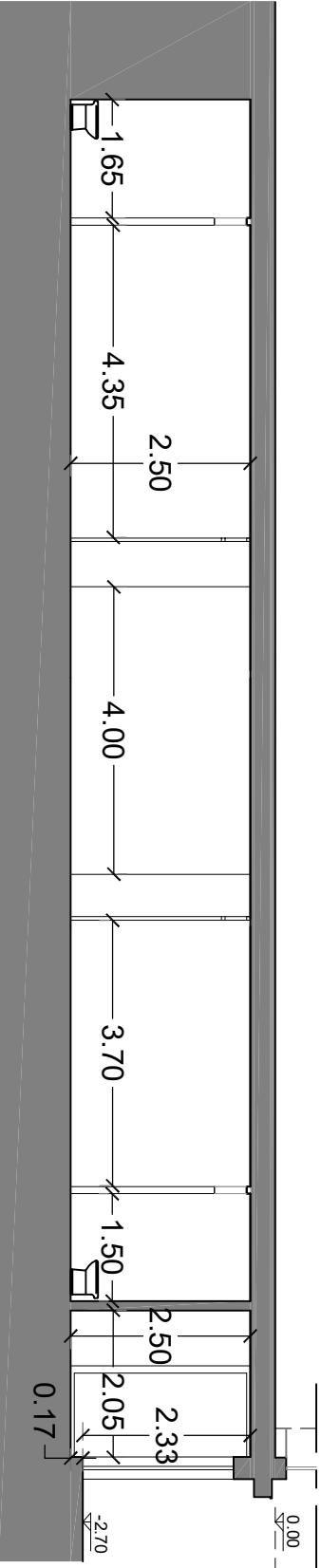
B

B'

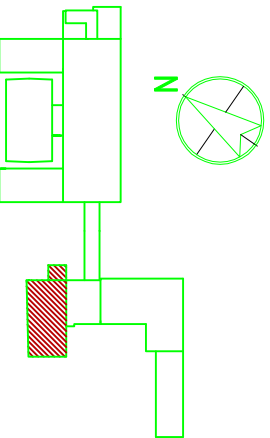
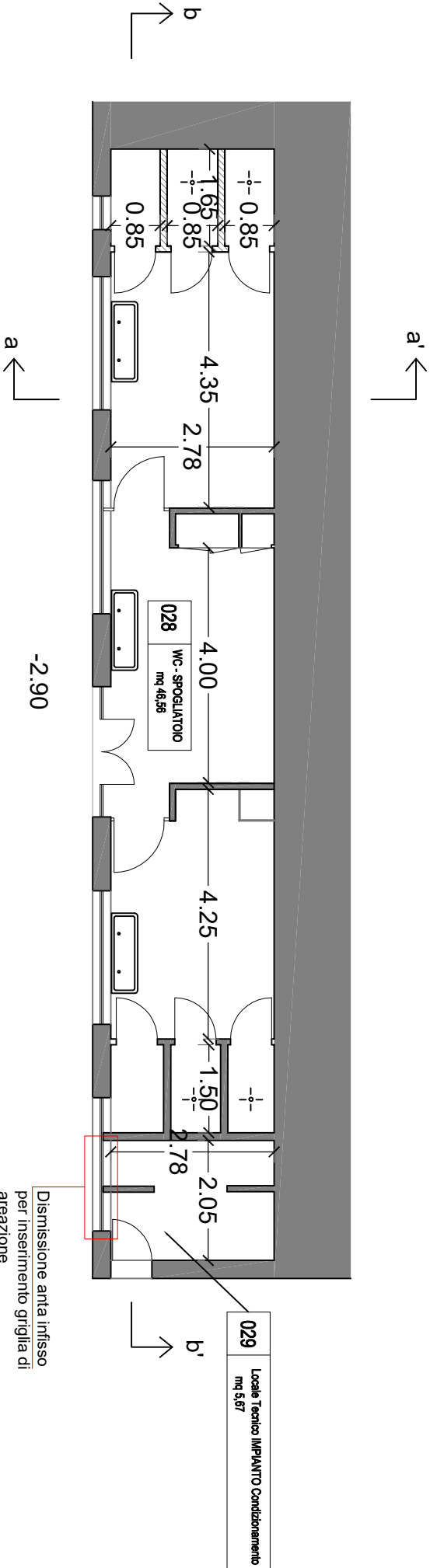




SEZIONE a-a'

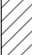
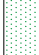








SEZIONE b-b'







Legenda	
	Demolizione pavimento [21.01.06]; [21.01.09]
	Demolizione controsoffitto [21.01.17] [21.01.18]
	Apertura vano porta [21.01.01]
	Demolizione muratura e/o pannelli [21.01.04]
	Demolizione solaio [21.01.21] [21.01.22]
	Dismissione soglia di marmo [21.01.07]
	Dismissione
	Rimozione investimento [21.01.06]

TERRAZZO PIANO 1	A 162.00 mq p 52.25 m
-------------------------	--------------------------

canzone patetica di
cantongesso [21.01.17]

Dismissione pavimentazione esistente
[21.01.06] [21.01.09] [NP.25]

Demolizione pavimento e controsoffitto in cartongesso

Scomposizione solaio per vano ascensore [21.01.21] [21.01.22]

smontaggio e ricollocazione cammino

The floor plan shows the following rooms and areas:

- 110 Ufficio**: A 22.38 mq, P 18.92 m, H controsoffitto 3.00 m.
- 109 Ufficio**: A 17.96 mq, P 17.04 m, H controsoffitto 3.00 m.
- 108 Ufficio**: A 21.35 mq, P 19.16 m, H controsoffitto 3.00 m.
- 107 Ufficio**: A 18.64 mq, P 17.53 m, H controsoffitto 3.05 m.
- 106 Ufficio**: A 29.50 mq, P 18.52 m, H controsoffitto 3.05 m.
- 105 Ufficio**: A 18.82 mq, P 17.40 m, H controsoffitto 3.18 m.
- 104 WC**: A 15.74 mq, P 16.47 m, H controsoffitto 2.75 m.
- 103 Corridoio**: A 13.72 mq, P 21.20 m, H controsoffitto 3.00 m.
- 102 Disimpegno**: A 26.75 mq, P 21.12 m, H controsoffitto 3.05 m.
- 101 Locale Tecnico**: A 17.72 mq, P 5.60 m.
- 111 Ufficio**: A 44.65 mq, P 30.00 m, H controsoffitto 3.00 m.

Other features include a staircase, a ramp labeled "Rampante", and various structural elements like columns and walls. Dimensions are provided for each room and overall sections.

Rifacimento bagni
A 15,74 mq
p 16,47 m
H controsoff 2,75 m

101	Locale Tecnico
A 1.72 mq p 5.60 m	

techné
INGEGNERI ASSOCIATI

via Franz Lehár, 6 - 90145 - Palermo
tel/fax 0915075648 techné.ing@libero.it

PIANTA PIANO PRIMO - DEMOLIZIONI

TAV
06.6

Architectural floor plan of a school building, showing various rooms and corridors. The plan includes dimensions, area and perimeter calculations, and specific notes.

Rooms and Dimensions:

- 001 PORTICCHETTO:** H 3.80 m
- 002-003 HALL INGRESSO:** A: 50.37 mq, P: 40.80 m
- 007 ARCHIVO 1:** A: 29.93 mq, P: 28.05 m, H controsoffitto 3.54 m
- 007 A.I. WC n°1:** A: 14.25 mq, P: 15.75 m, H controsoffitto 3.00 m
- 006 VA D'ESODO:** A: 9.80 mq, P: 12.88 m, H controsoffitto 3.20 m
- 004-005 SALA 1:** A: 31.75 mq, P: 27.03 m, H 4.05 m
- 008 ARCHIVO 2:** A: 14.45 mq, P: 15.70 m, H controsoff. 2.65 m
- 009 EX ALUNNI:** A: 18.75 mq, P: 17.50 m

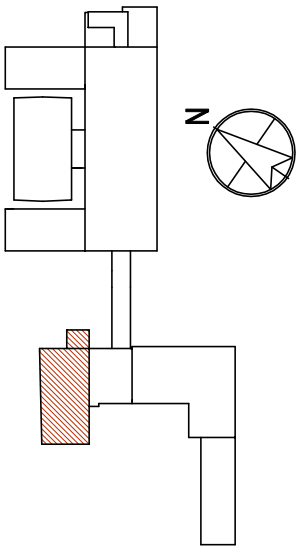
Notes and Details:

- Rilascio massetto e pavimentazione
- Rinvolgimento del controsoffitto 50x60 smontato
- Passaggio lubrificazioni scario
- Creazione bagno
- Rilascio massetto e pavimentazione
- Pittura e lucidatura marmo esistente

Dimensions and Area Calculations:

- 007 ARCHIVO 1: A: 29.93 mq, P: 28.05 m, H controsoffitto 3.54 m
- 007 A.I. WC n°1: A: 14.25 mq, P: 15.75 m, H controsoffitto 3.00 m
- 006 VA D'ESODO: A: 9.80 mq, P: 12.88 m, H controsoffitto 3.20 m
- 004-005 SALA 1: A: 31.75 mq, P: 27.03 m, H 4.05 m
- 008 ARCHIVO 2: A: 14.45 mq, P: 15.70 m, H controsoff. 2.65 m
- 009 EX ALUNNI: A: 18.75 mq, P: 17.50 m

TAV
06.7



Legenda

Rifacimento pavimento
(vedi TAV 06.10)

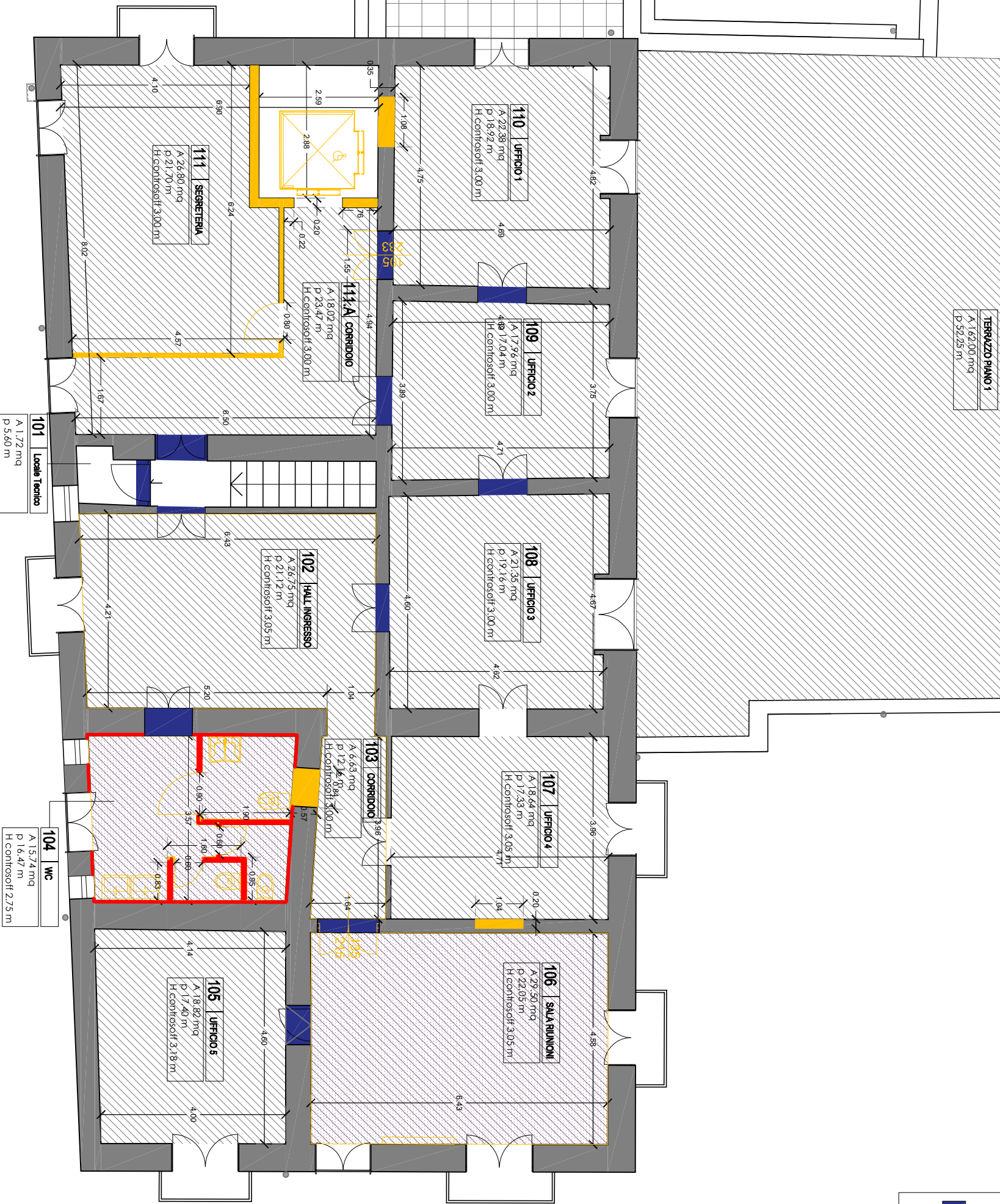
Costruzione muratura
[02.02.08];[02.01.01.01];
[02.02.02.02]

Ricostruzione

Nuovo rivestimento
[05.02.01]

Nuova soglia marmo
[10.01.01.05]

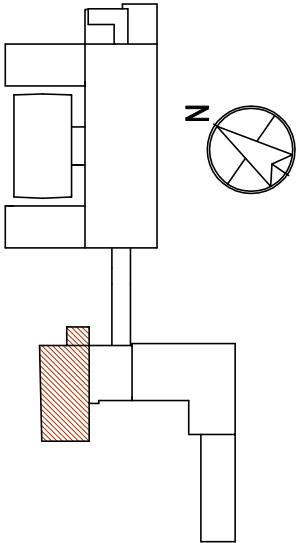
Nuovo controsoffitto
(vedi TAV 06.12)



PIANTA PIANO PRIMO - RICOSTRUZIONI

Corpo "A" - non oggetto di intervento

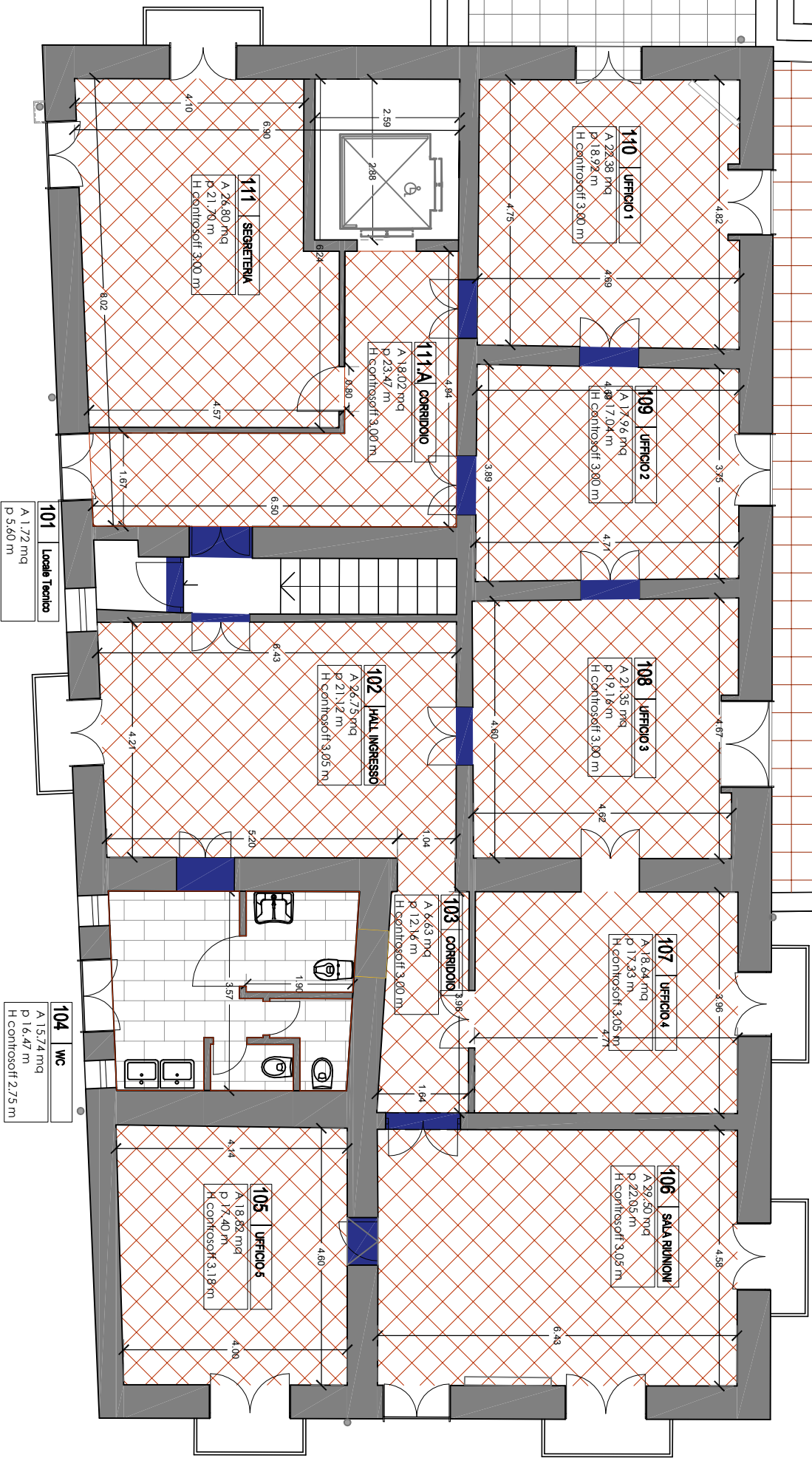




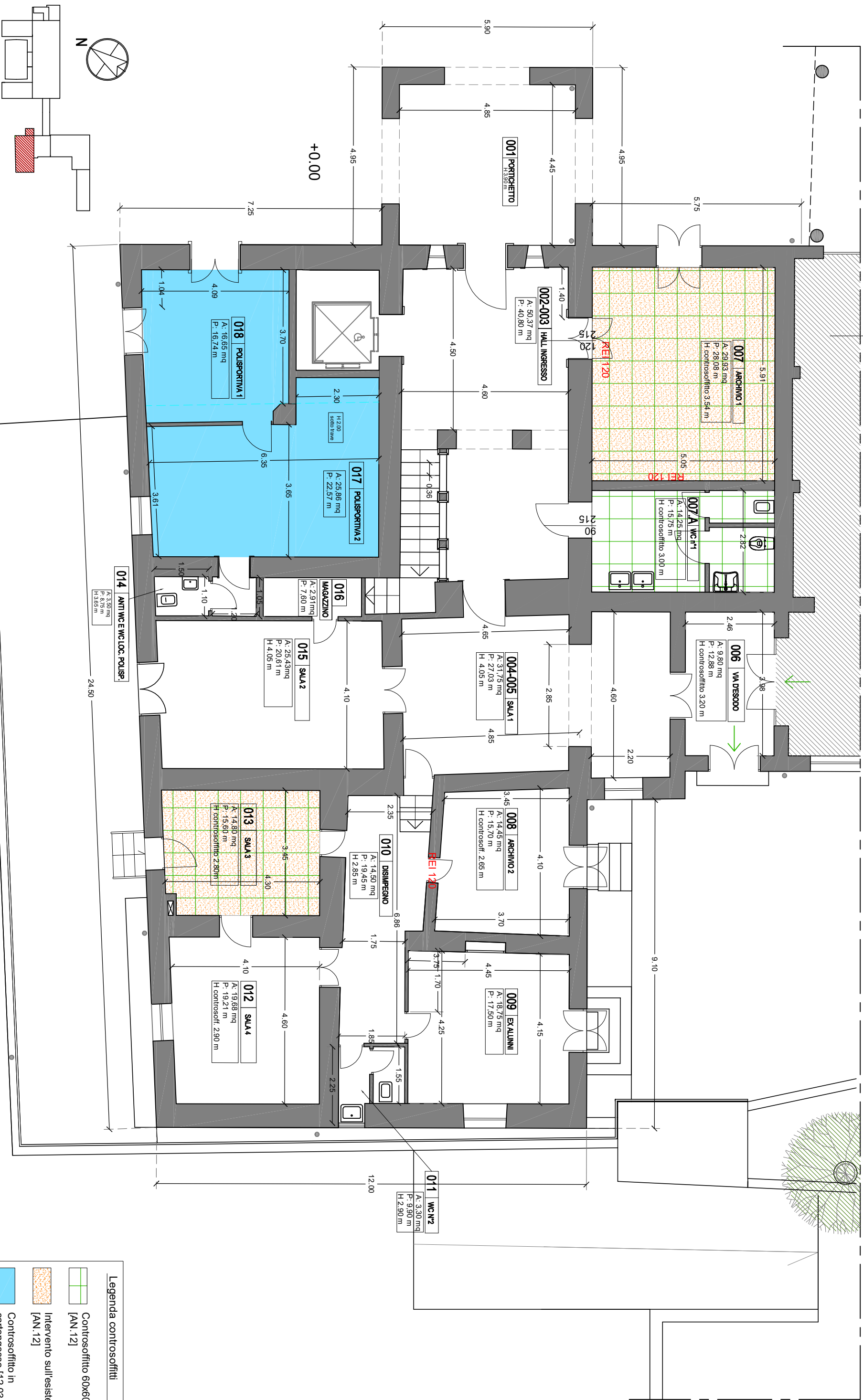
Legenda	
	Cotto siciliano [05.01.12.02]
	Ceramica [05.01.08]
	Marmo bicolore cm 30x30 [05.01.13.01]
	Plastrelle wc [05.11.03]
	Marmo grigio [10.01.01.05]

TERRAZZO PIANO 1	
A 162,00 mq	P 52,25 m

Pavimentazione in cotto siciliano
[12.01.01] [12.01.03] [12.02.04.01]
[12.01.19] [05.01.12.02] [23.04.03]



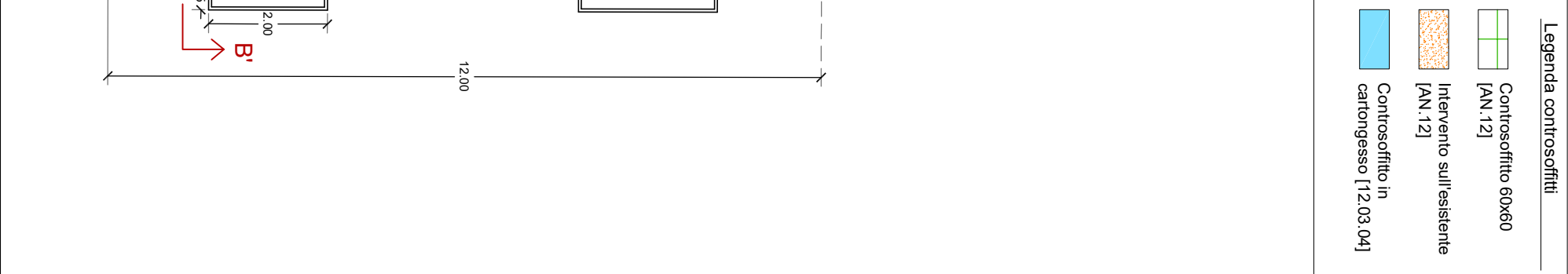
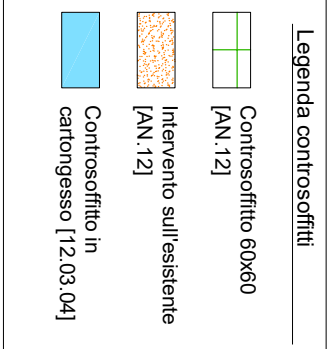
Corpo "A" - non oggetto di intervento

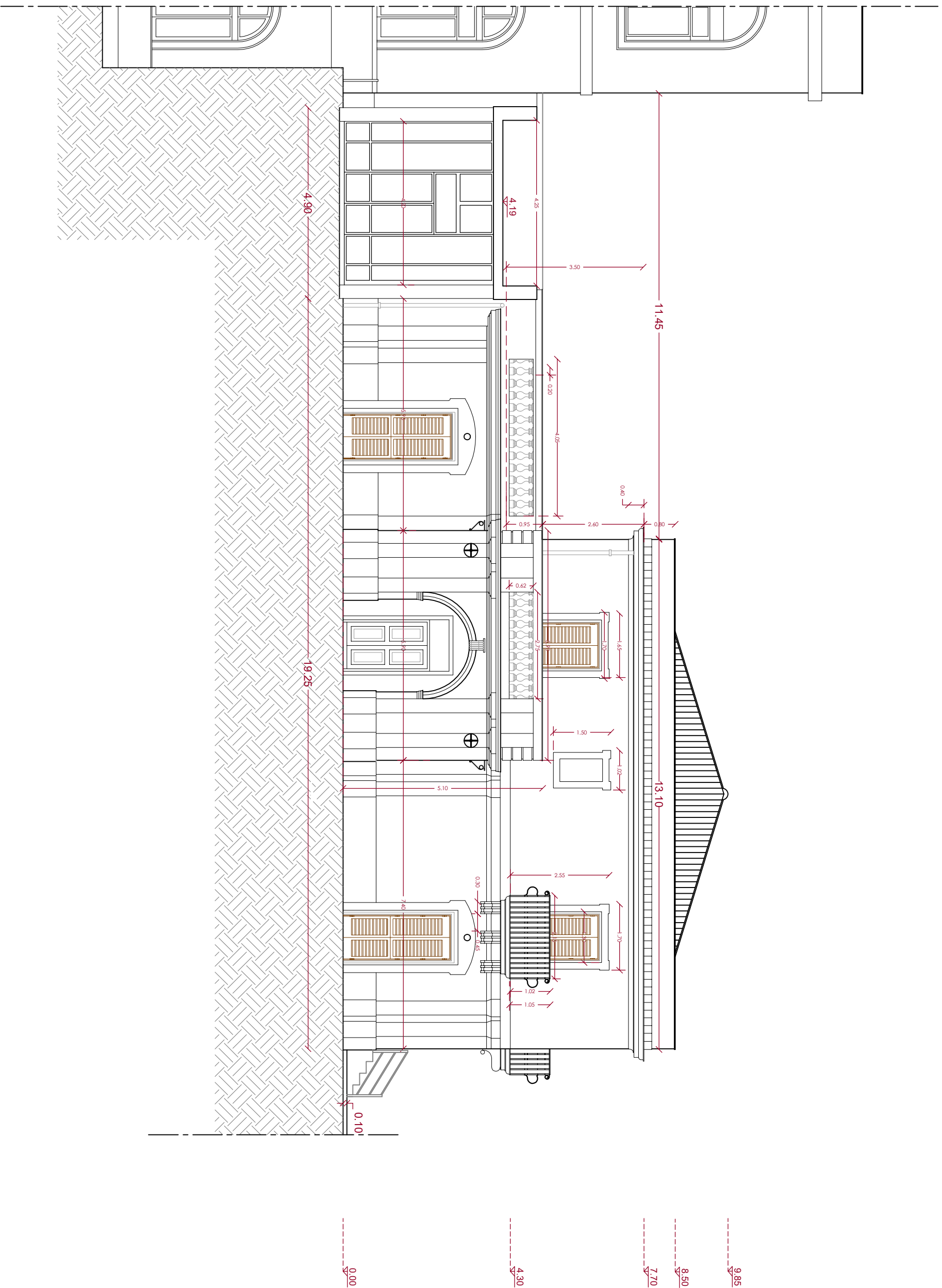


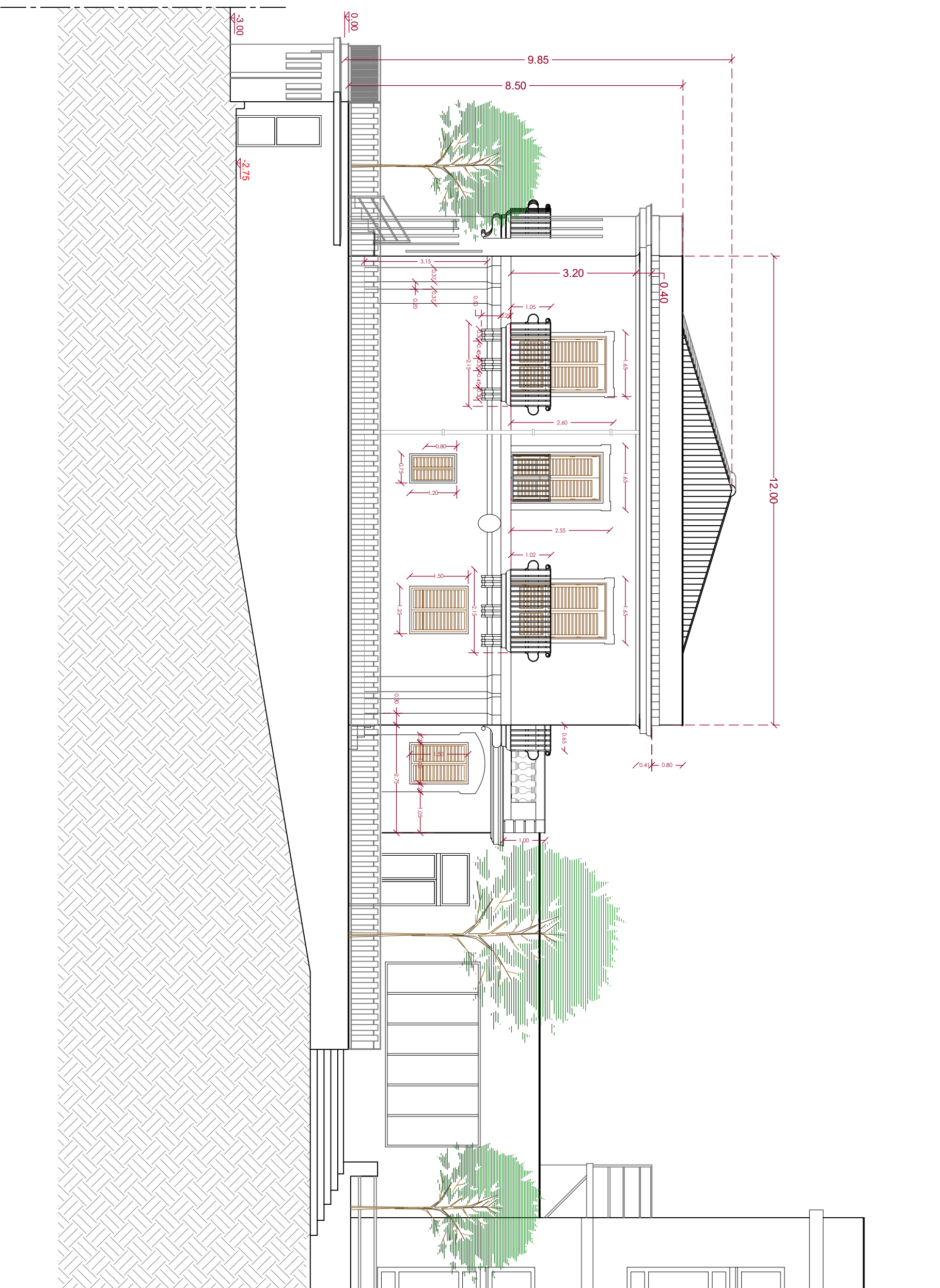
Legenda contrasoffitti

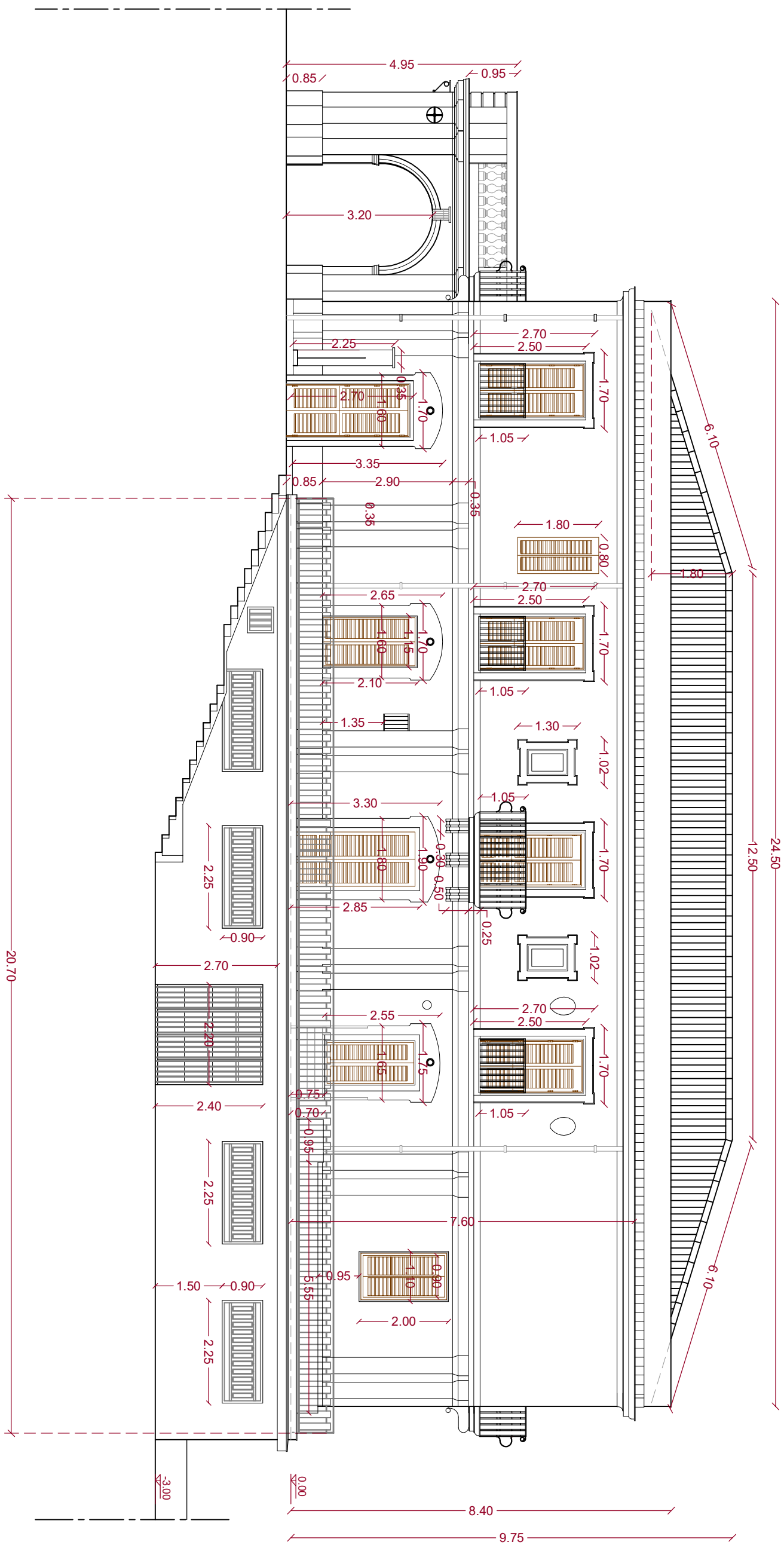
- Contrasoffitto 60x60 [AN.12]
- Intervento sull'esistente [AN.12]
- Contrasoffitto in cartongesso [12.03.04]

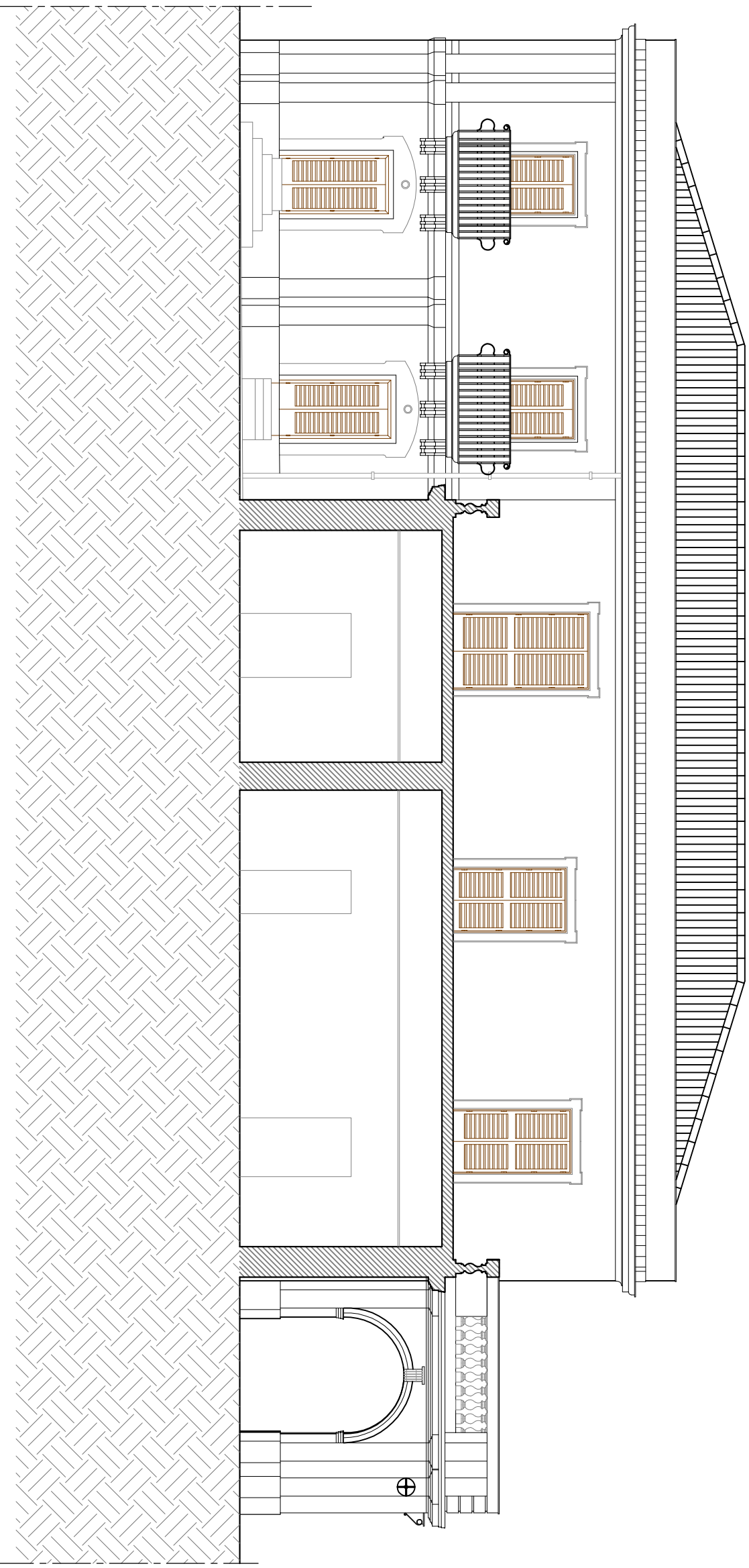
PIANTA PIANO TERRA - CONTROSOFFITTI

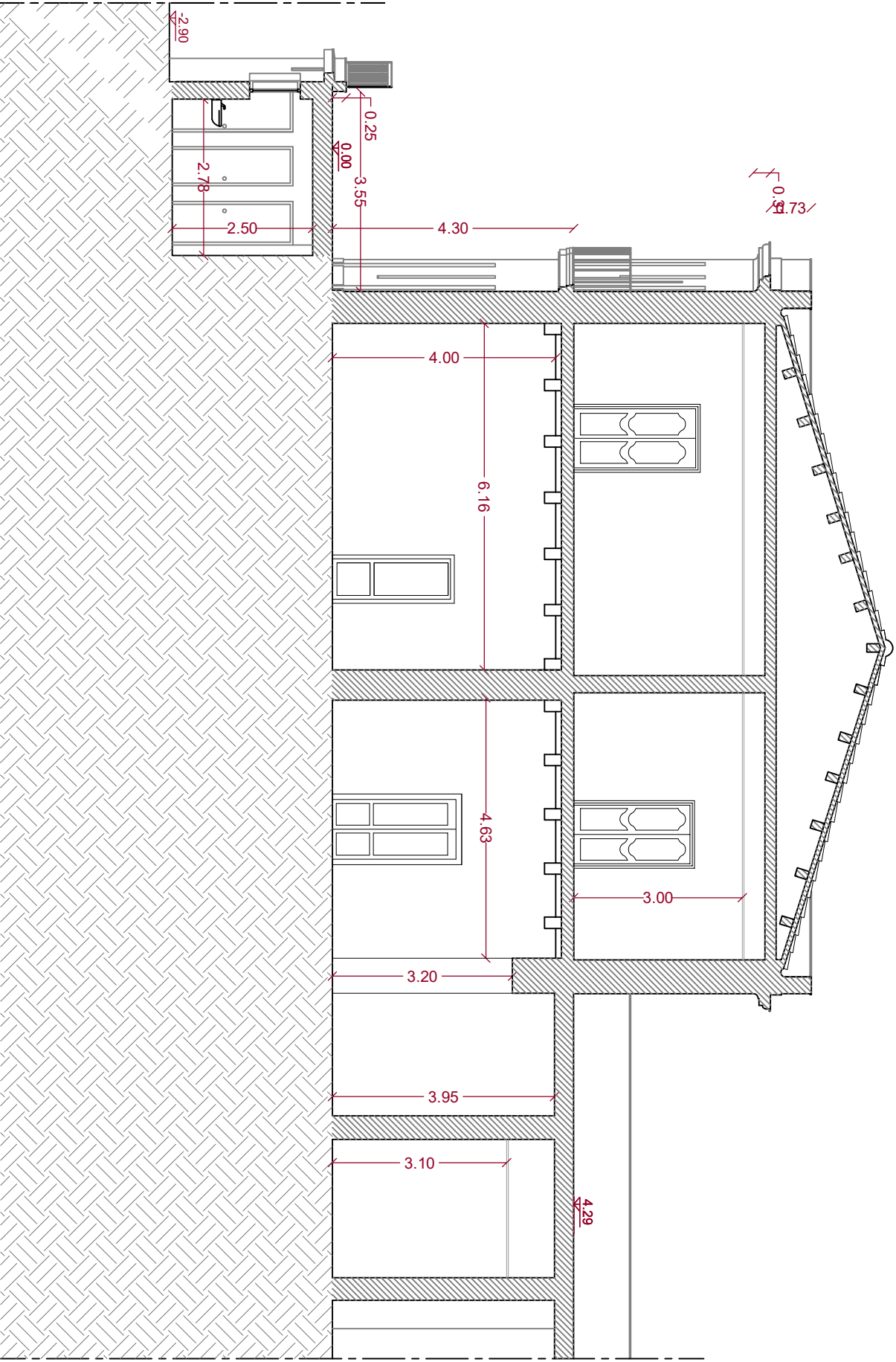




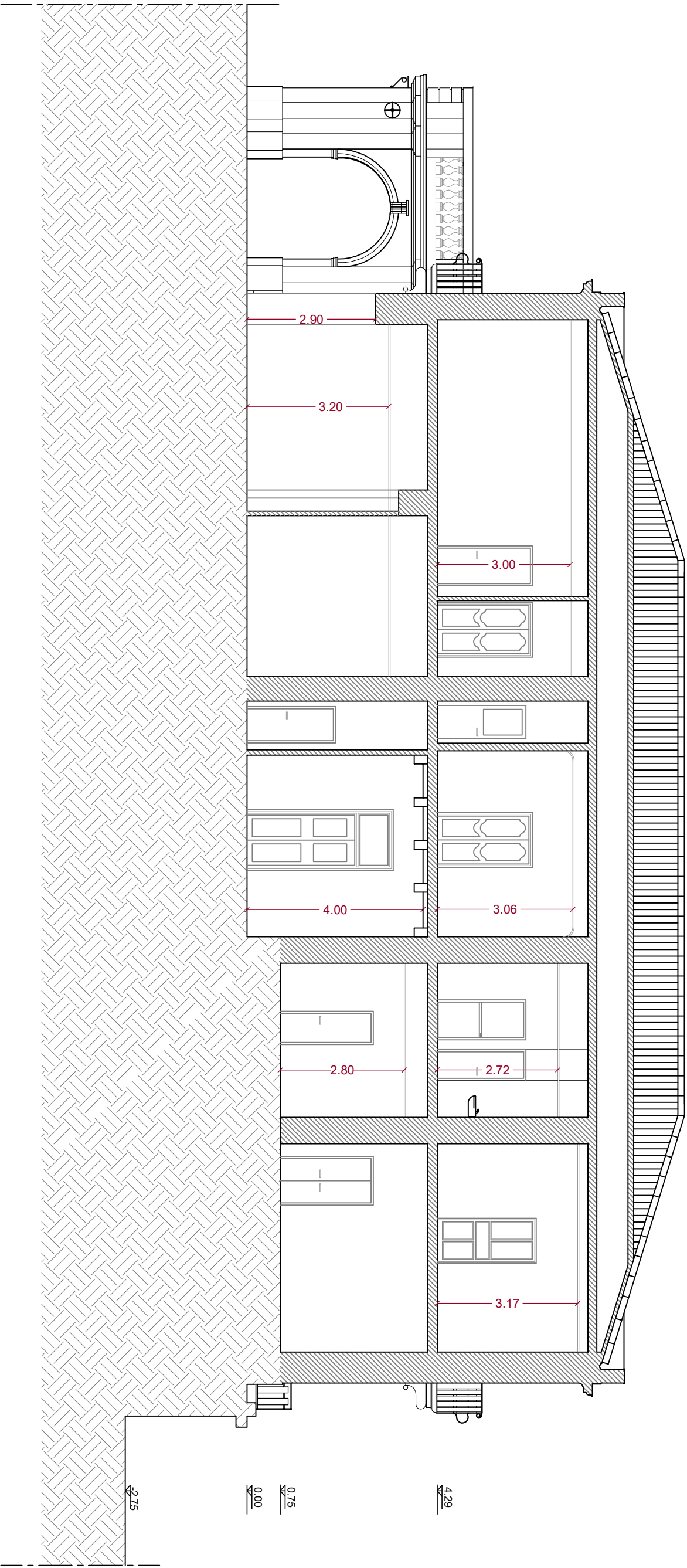








SEZIONE A - A'



SEZIONE B - B'